

Window Schedule					
Symbol	QTY	Unit Size	R.O.	Type	Remarks
(A)	5	35 1/2" x 37 1/2"	36" x 38"	SH	Ins w/Screens & Grids (1 Set Mull'd Together)

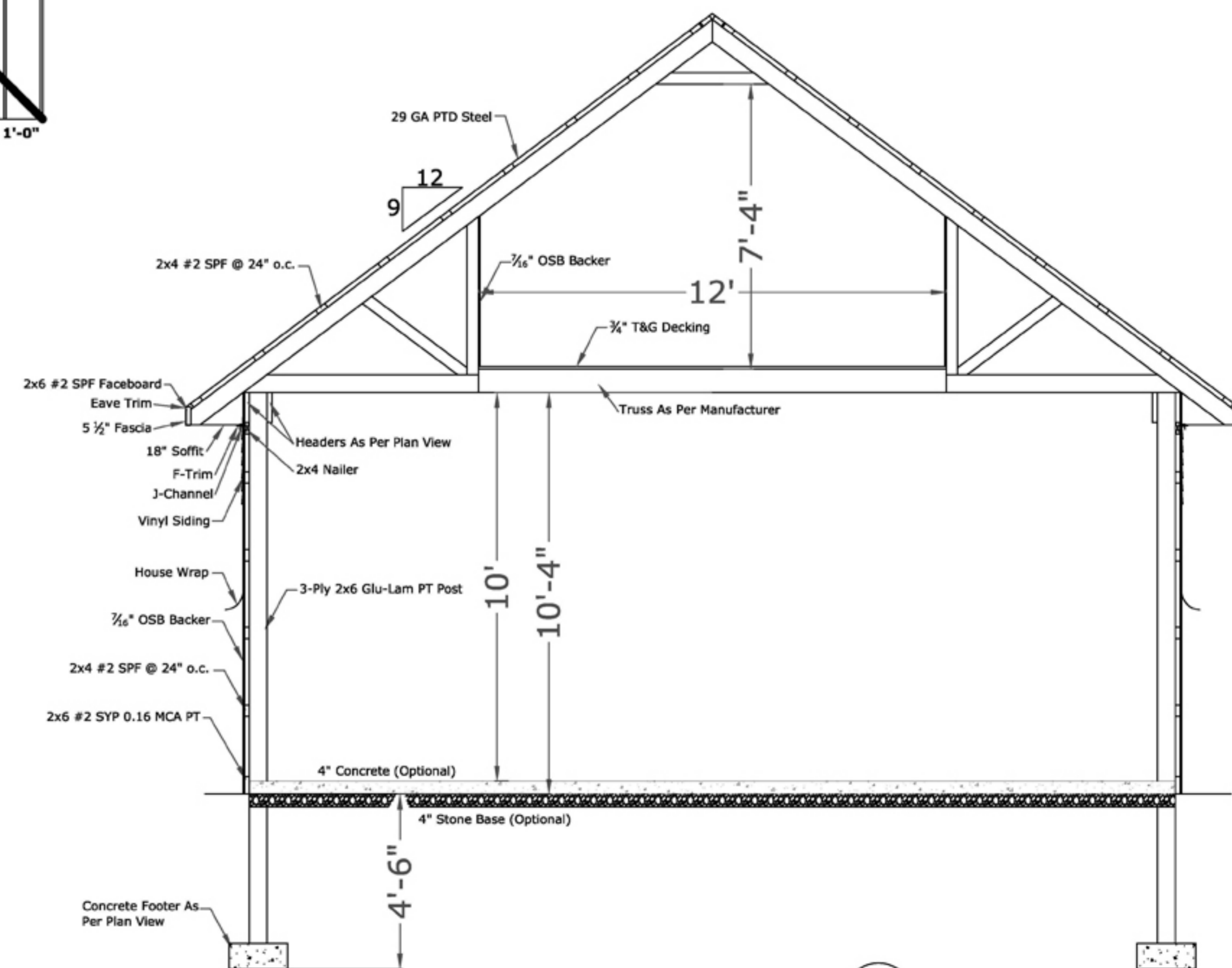
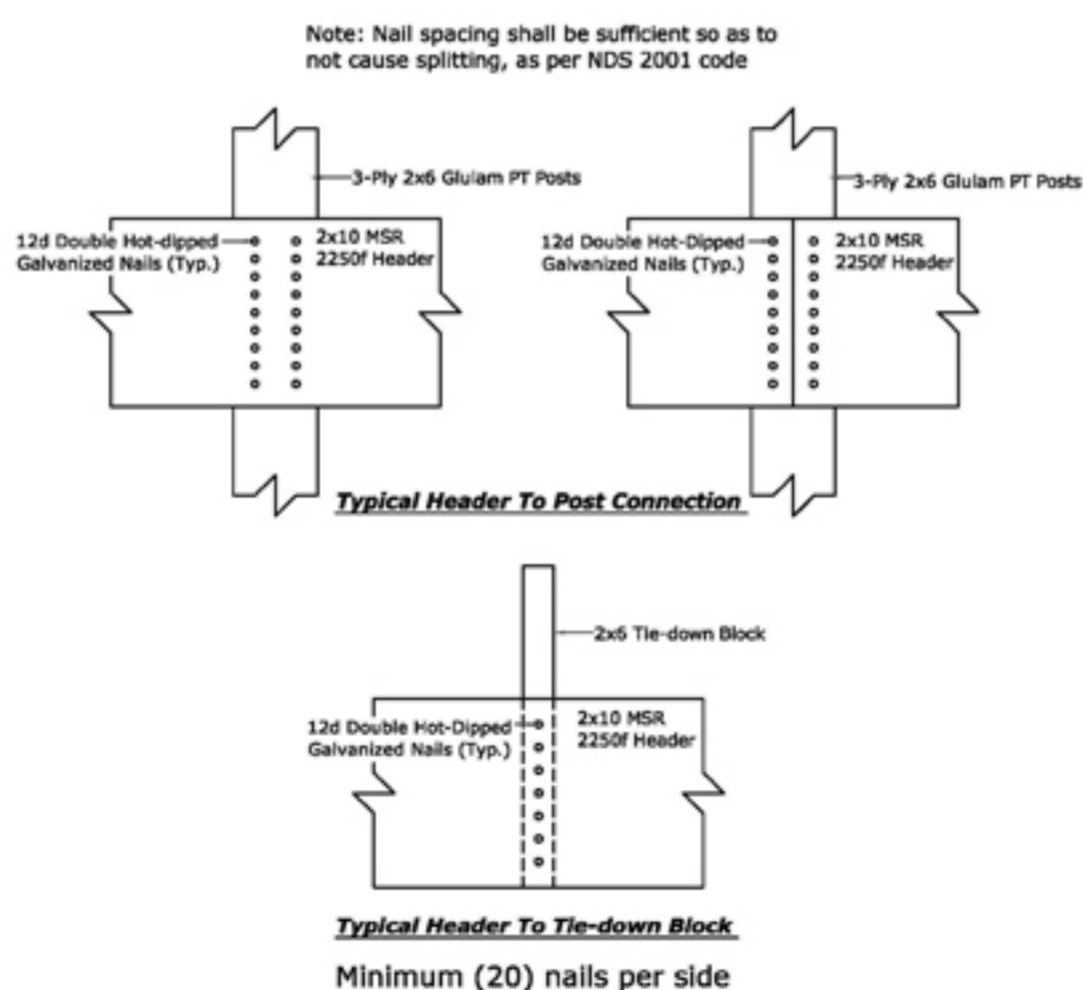
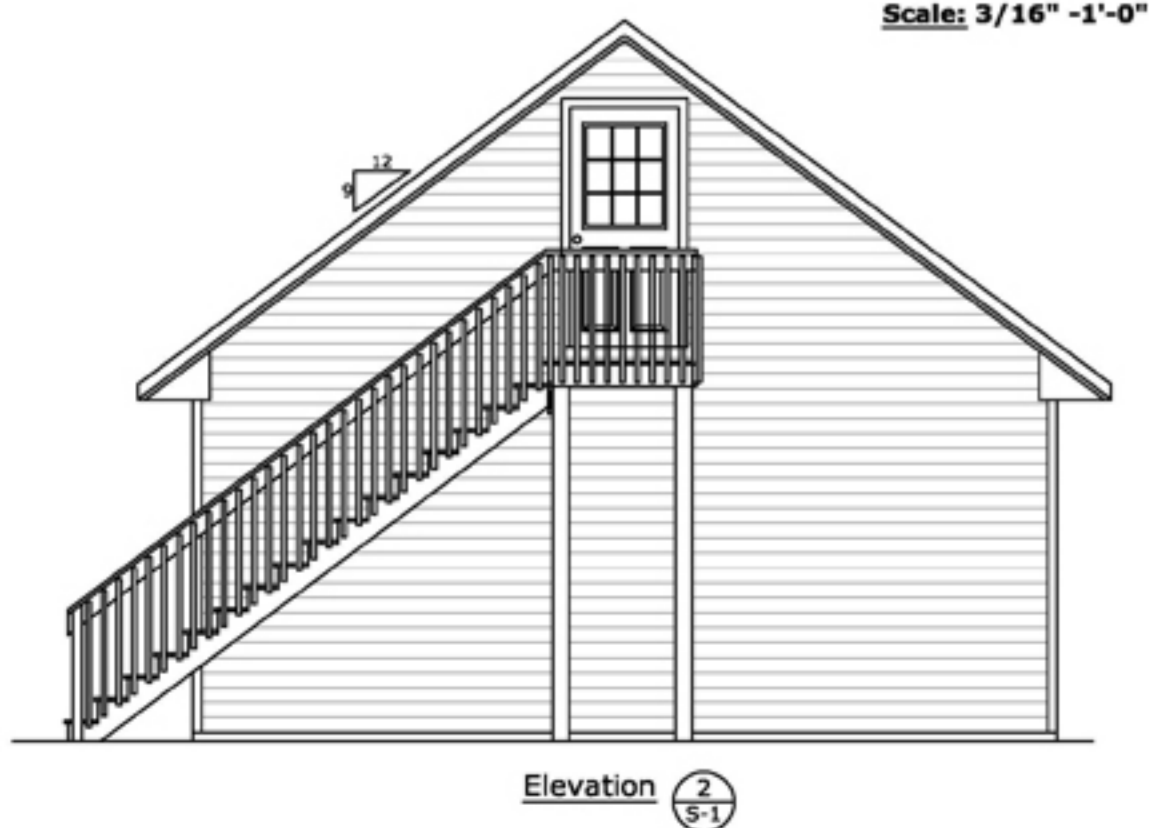
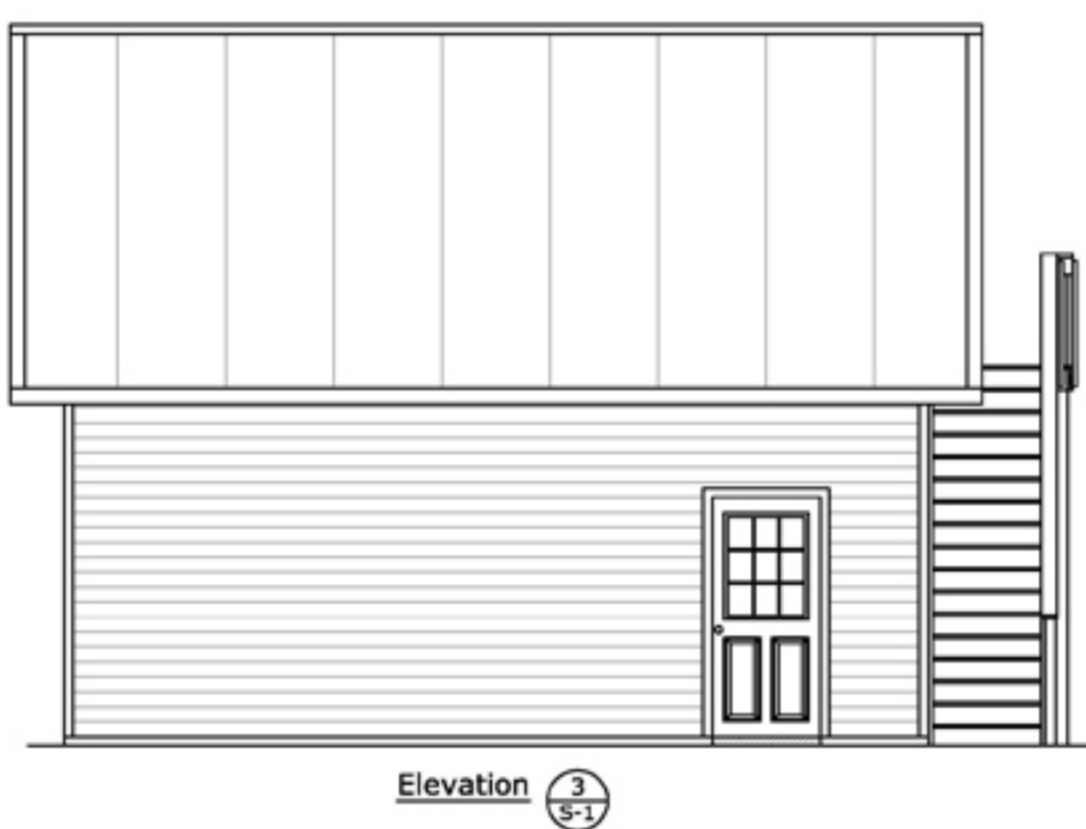
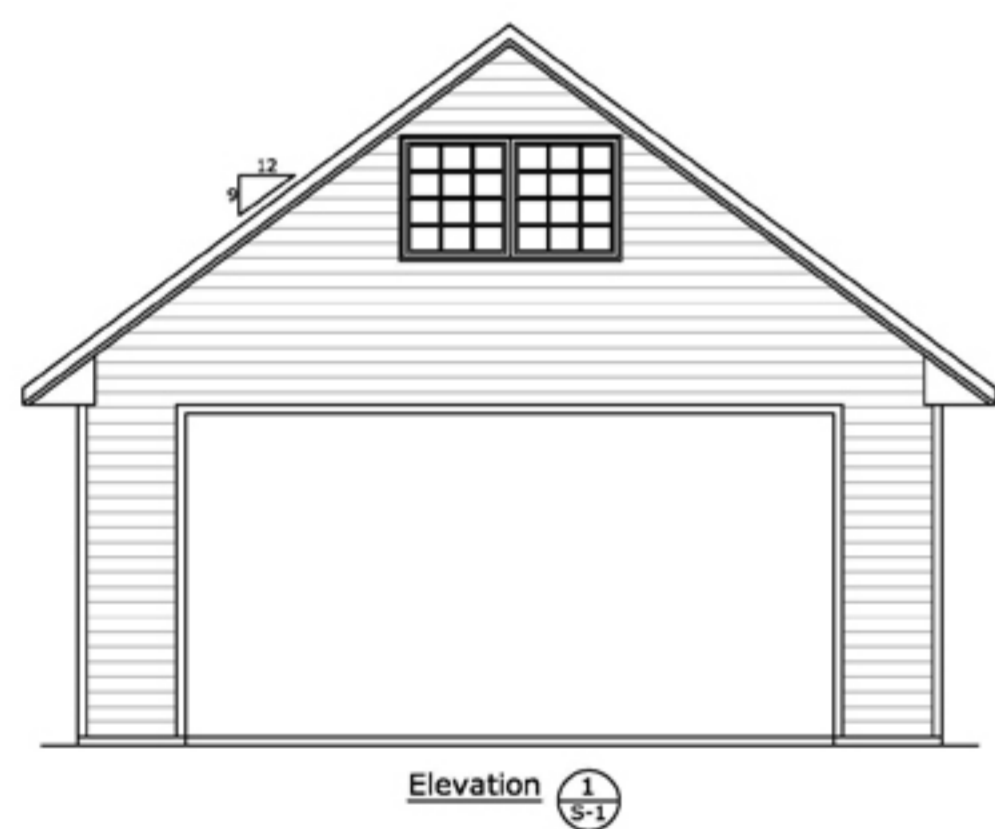
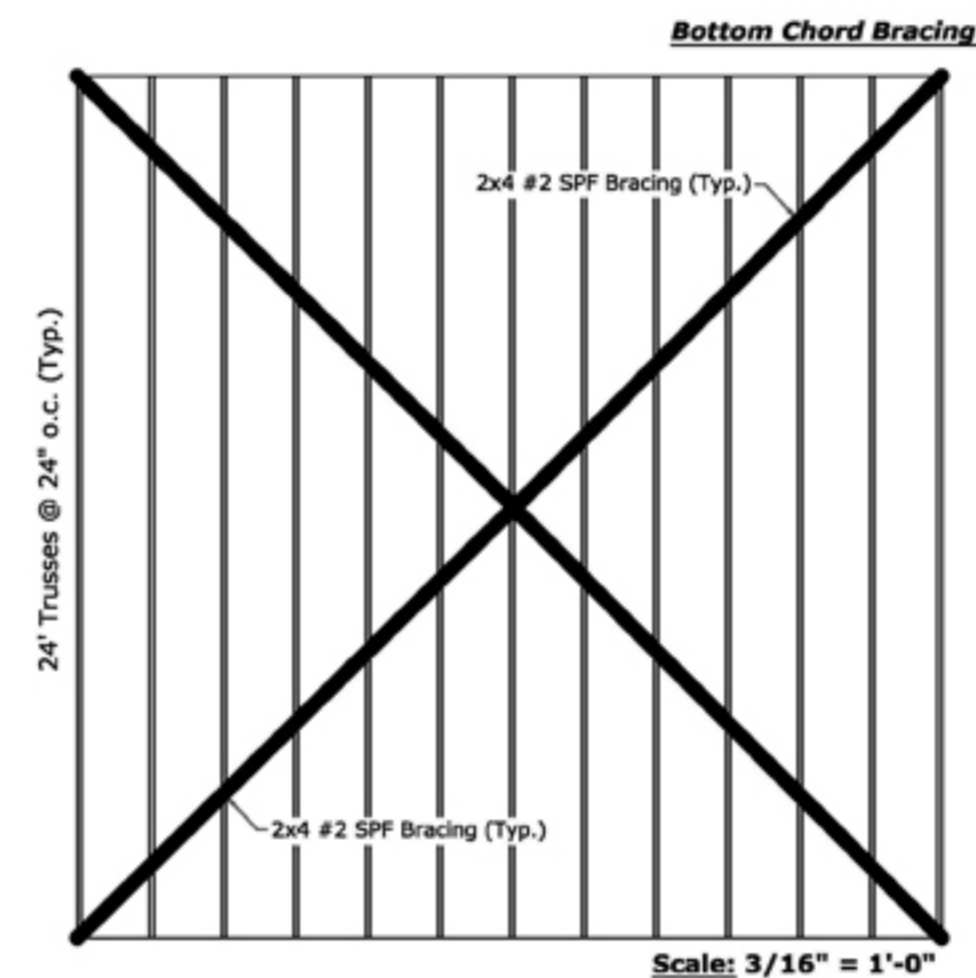
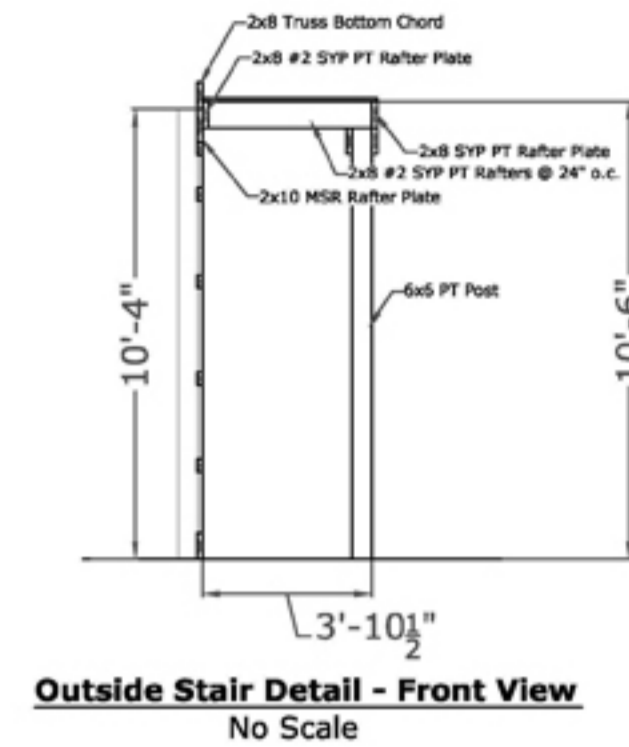
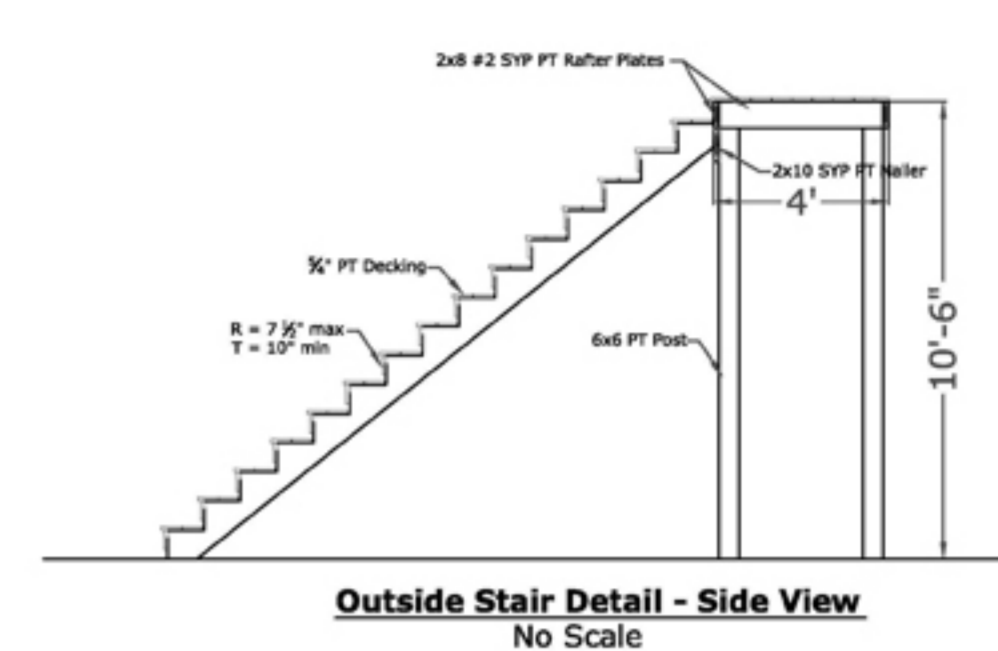
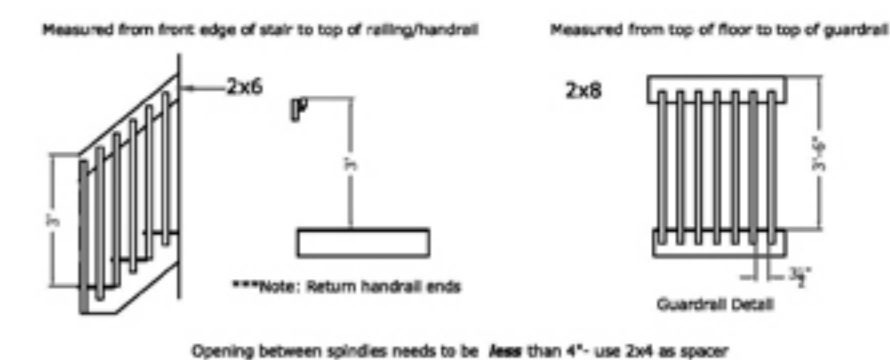
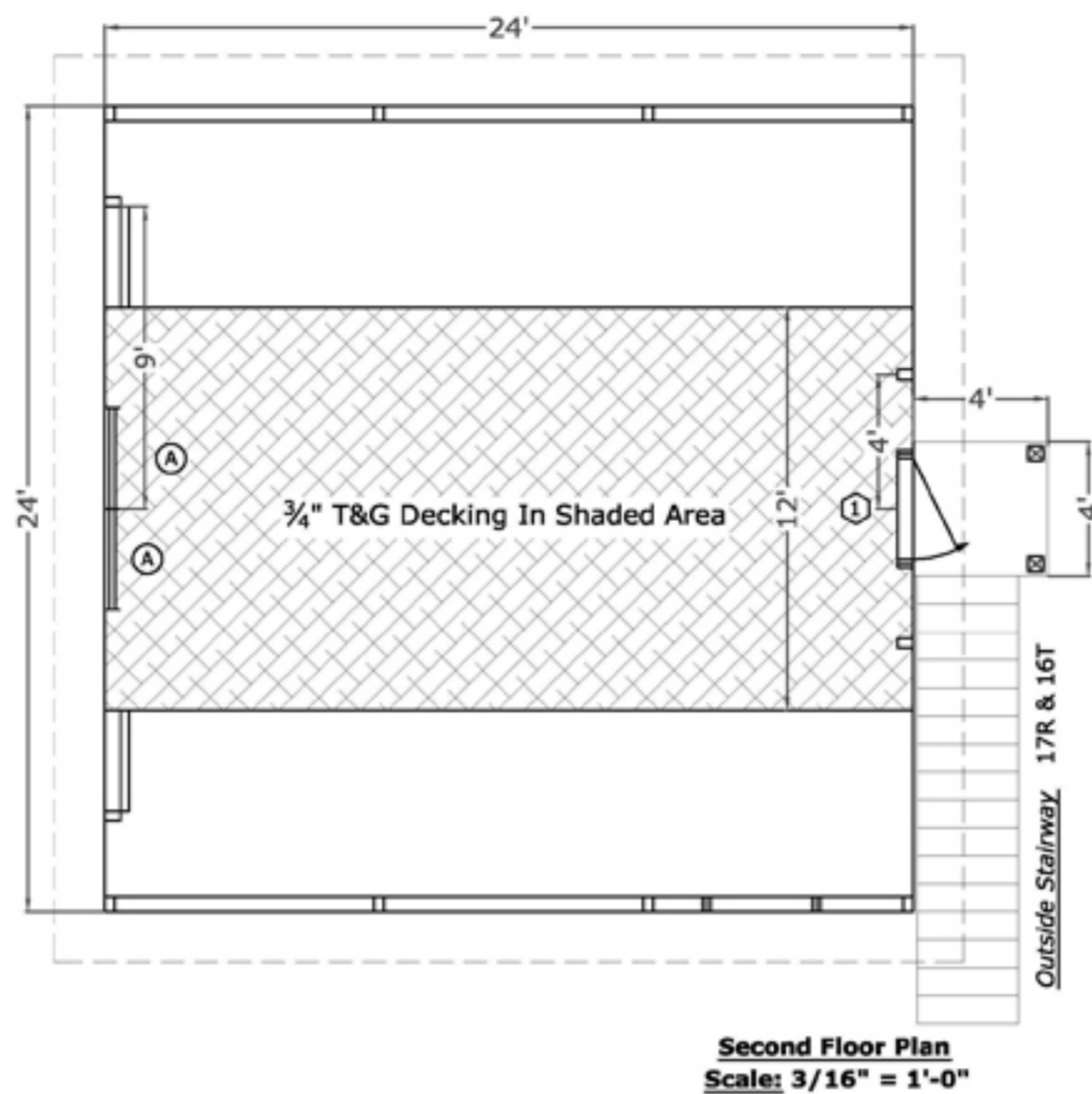
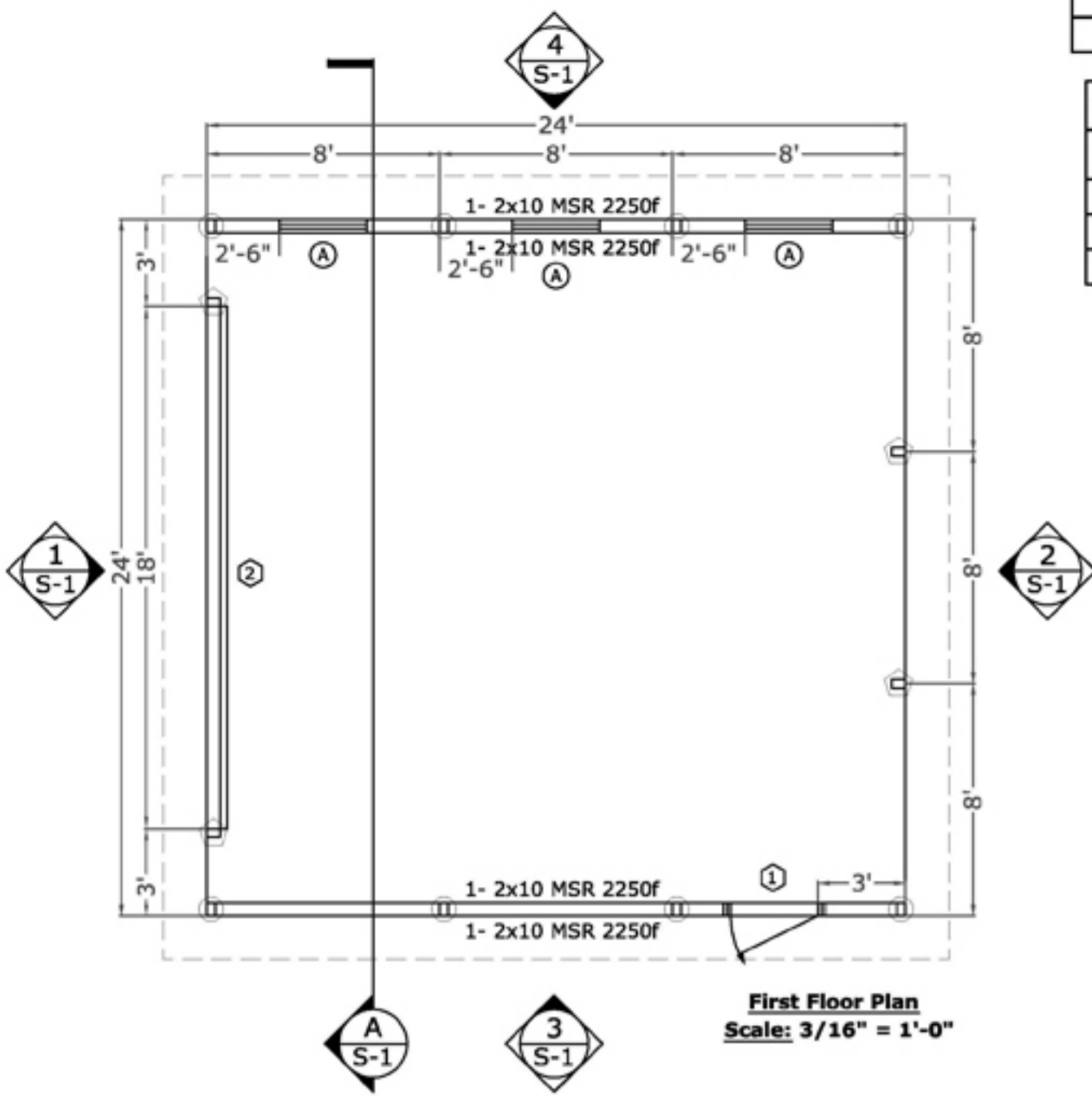
Door Schedule						
Symbol	Qty.	Size	R.O.	Swing	Style	Remarks
(1)	2	3068	N/A	RHOS	9-Lite	
(2)	1	18'x9'	N/A	N/A	Frame-Out	

Building Specifications:

- 24' Attic Truss, 16 1/2" o.h., 1/2 Pitch, 24" o.c.
- Bottom Chord Ties As Per Truss Manufacturer
- 10'-4" Inside Height
- Ridge Vent
- 18" Gable Overhang
- Second Floor w/40-10# Loading
- Outside Stairs w/4'x4' Landing & Railing
- Vinyl Siding
- USP RT-16A Hurricane Ties on Interior Trusses
- USP RT-7 Hurricane Ties on Gable Trusses
- All Footers ϕ = 18" ϕ x 8" Dry-Mix Concrete; Except ϕ = 20" ϕ x 10"
- 3-Ply 2x6 Glu-Lam PT Posts

Design Load Criteria:

- Roof Load:
 - Top Chord Live Load=42 psf
 - Top Chord Dead Load= 7 psf
 - Bottom Chord Live Load= 0 psf
 - Bottom Chord Dead Load= 10 psf
- Snow Load:
 - Ground Snow Load= 50 psf
- Wind Load:
 - Basic Wind Speed (3 second gust)= 110 mph
- Construction Classification: V-B
- Building Peak Height: 20'-0"



(A S-1)